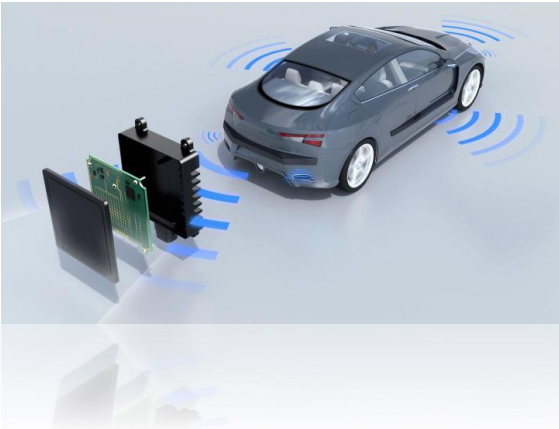


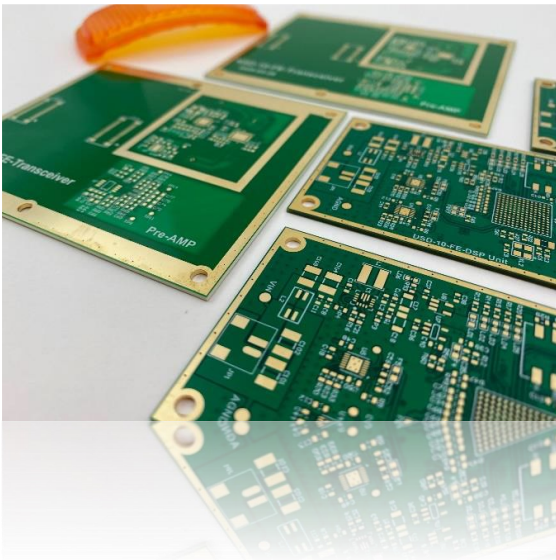
DEVELOPMENT OF MICROWAVE DOPPLER SENSOR



- RF Simulation
- Custom Firmware
- PCB Antenna Design
- Prototyping
- Custom PCB
- Bluetooth 5.0

Project Overview

Henway Technologies, Ltd. is working on a custom 24GHz Doppler sensing project. **With this radio we can detect the speed and direction of moving objects through a sealed plastic enclosure.** We can also filter out large and small moving objects.



The radio needed to be custom made for use in harsh and abusive environments. Henway used RF simulation tools to tune the detection width and distance. We worked closely with the clients to find the perfect tradeoff between performance and size.

We prototyped the design and verified the results against our modeling. We wrote the digital signal processing firmware (DSP), did the PCB design, tested the prototypes, and we are on our way to delivering a robust prototype.